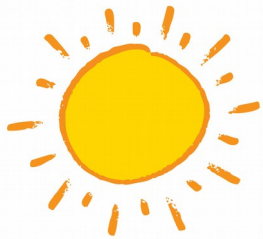


2016 San Francisco Hickory Open

Saturday & Sunday
October 8 – 9



The NorCal group invites you to historic Lincoln and Sharp Park Golf Courses!



San Francisco and October are a perfect match with an annual forecast for blue skies and Indian Summer conditions. You won't find a more perfect time of year to play golf in San Francisco!

Saturday October 8th – 11:30
Lincoln Park Golf Course

Opened: 1902

Architects: Jack Neville (Pebble Beach)

Herbert Fowler (Royal Lytham & St. Anne's)

Jack Fleming (Fleming Course at Harding Park)



San Francisco's first municipal golf course, Lincoln Park is a joy to navigate with an abundance of interesting ground and design features that make up the heart and soul of the course. The demanding back nine Par 3's play as short par 4's, while 3 of the inward par 4's are under 300 yards! The grand daddy of these par 3's, the signature 17th, with the Golden Gate Bridge as a backdrop, can play over a whopping 220 yards!

Lincoln Park is best known to Northern Californians as the birth place of "The City".

Bo Links, San Francisco Golf Historian writes:

The San Francisco City Championship, "The City," as the local championship is known, is the oldest consecutively played competition in the world. Even the British Open – golf's oldest championship, which began in 1861 – took time off when the world was at war. So did the U.S. Open, the PGA Championship and the Masters, the other events comprising the modern "Grand Slam." So did virtually every other major event...





Stacy and John putting – scenic Lincoln Park.

2015 San Francisco Hickory Open

*Sunday October 9th – 11:00
Sharp Park Golf Course*

Opened: 1932

Architect: Dr. Alister MacKenzie
- Augusta National, Cypress Point,
Royal Melbourne



The San Francisco Hickory Open concludes at Sharp Park just down the road in Pacifica. The scenic parkland is a 1930's Alister MacKenzie gem that continues to inspire the modern generation golfer. At just over 6100 yards from the white tees, Sharp Park is a traditional golden era hickory design framed in a spectacular setting with wide generous fairways and expansive contoured greens.

U.S. Open Champion Ken Venturi, who grew up on San Francisco's public courses, called Sharp Park "Dr. MacKenzie's great gift to the American public course golfer."

Richard Harris & Bo Links - SFPublic Golf Alliance wrote:

When Alister MacKenzie in 1930 unveiled his design for the new Sharp Park Golf Course, he promised San Francisco public golfers that the course would be "as sporty as the Old Course at St. Andrews, and as picturesque a golf course as any in the world."

The great MacKenzie made good on his promise, and the golf course -- hard by the Pacific at Salada Beach on the San Mateo County coast -- opened for play in 1932.



Tournament Details

*** 36 holes medal play NET event using Oct 1st handicaps**

- 18 holes Saturday & 18 holes Sunday.
- Low gross to be additionally recognized.

*** Men - White tees @ Lincoln Park & Sharp Park**

Lincoln Park - 4948 yards 64.6/106

Sharp Park - 6133 yards 70.4/118

*** Ladies - Red tees @ Lincoln & Sharp Park**

Lincoln Park - 4732 yards 67.0/106

(2.4 harder course = 2 additional strokes)

Sharp Park - 5793 yards 72.9/120 =

(2.5 harder course = 3 additional strokes)

*** Loaner clubs available as always!**



Costs

*** \$120 payable at course (check or cash) or can be sent in advance**

- please use entry form attached below if you'd like to send advance payment.

*** Your \$120 Includes all green fees (both courses), awards, and prizes.**

Carts if needed, purchased separately at course.

*** RSVP and sign up electronically via [Eventbrite service](#) or get in contact directly:**



email (norcalhickory@yahoo.com)

phone (831-247-3447)

www.norcalhickory.com website.

There is no deadline to enter, but please try to sign up sooner than later.

We have limited reserved space – These are both very busy metropolitan golf courses. Do not expect to play if you show up at the course unannounced or call us at last minute!

Thank you for your timely entry and we look forward to seeing you in San Francisco!

**2016 San Francisco Hickory Open
October 8th & 9th
Historic Lincoln and Sharp Park GC**

\$120 Includes – All Green Fees – Awards & Prizes
– Limited Field – Send in entry form soon

Make checks payable and send to:
Stacy Brown
142 Mentel Ave
Santa Cruz, CA 95062



* NET event using Oct 1st handicaps.
* Low gross to be additionally recognized.

NAME:

ADDRESS: _____

PHONE: _____

EMAIL: _____

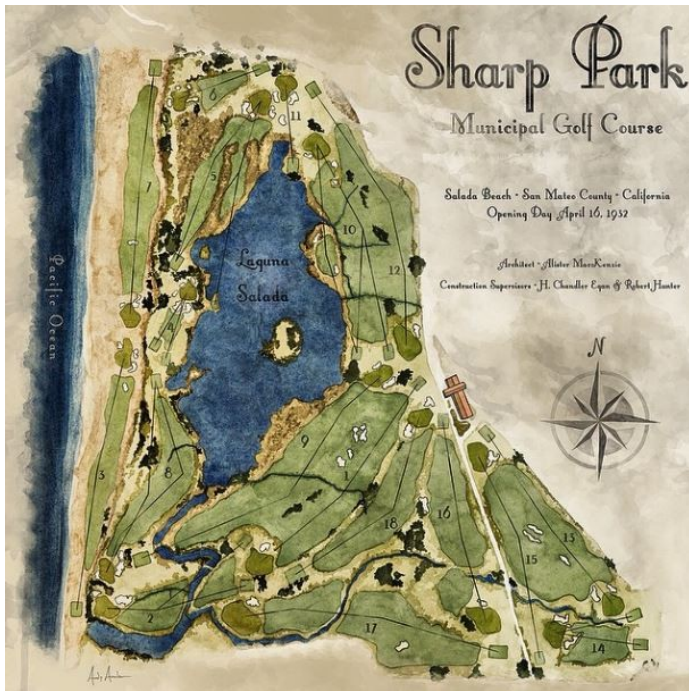
Handicap Source: _____ Current Index: _____
(Ghin# or other such as SOHG .. please specify)

phone: 831-247-3447

email: shenneuse@yahoo.com

www.norcalhickory.com for additional details, questions and inquiries.

... We have loaner clubs. Please get in touch.



Original Sharp Park Layout 1932 - MacKenzie

SUPPORT THE FIGHT TO SAVE SHARP PARK!

San Francisco Public Golf Alliance wrote:

“Sharp Park has for years been, and continues to be, the target of anti-golf zealots who have tried, unsuccessfully thus far, to close the course.

With heroic legal help from our friends at the Morrison Foerster law office, the San Francisco

Public Golf Alliance has helped defend San Francisco against lawsuits aimed at banning golf at Sharp Park. Working with historic preservationists, environmentalists, public officials and agencies at all levels of government, we are advancing a plan to preserve affordable public golf at Sharp Park, in concert with a habitat enhancement project approved by the U.S. Fish & Wildlife Service.”



The San Francisco Public Golf Alliance, together with the [Sharp Park men’s](#) and [women’s golf clubs](#), [Pacifica Historical Society](#), and the [Alister MacKenzie Foundation](#) hold an annual Charity fundraiser. All proceeds go to the ongoing campaign to Save and Renovate Sharp Park Golf Course.



www.sfpublicgolf.org

NorCal Hickory member and San Francisco native, Gerry Stratford, tees off in the annual Save-Sharp-Park fundraiser.